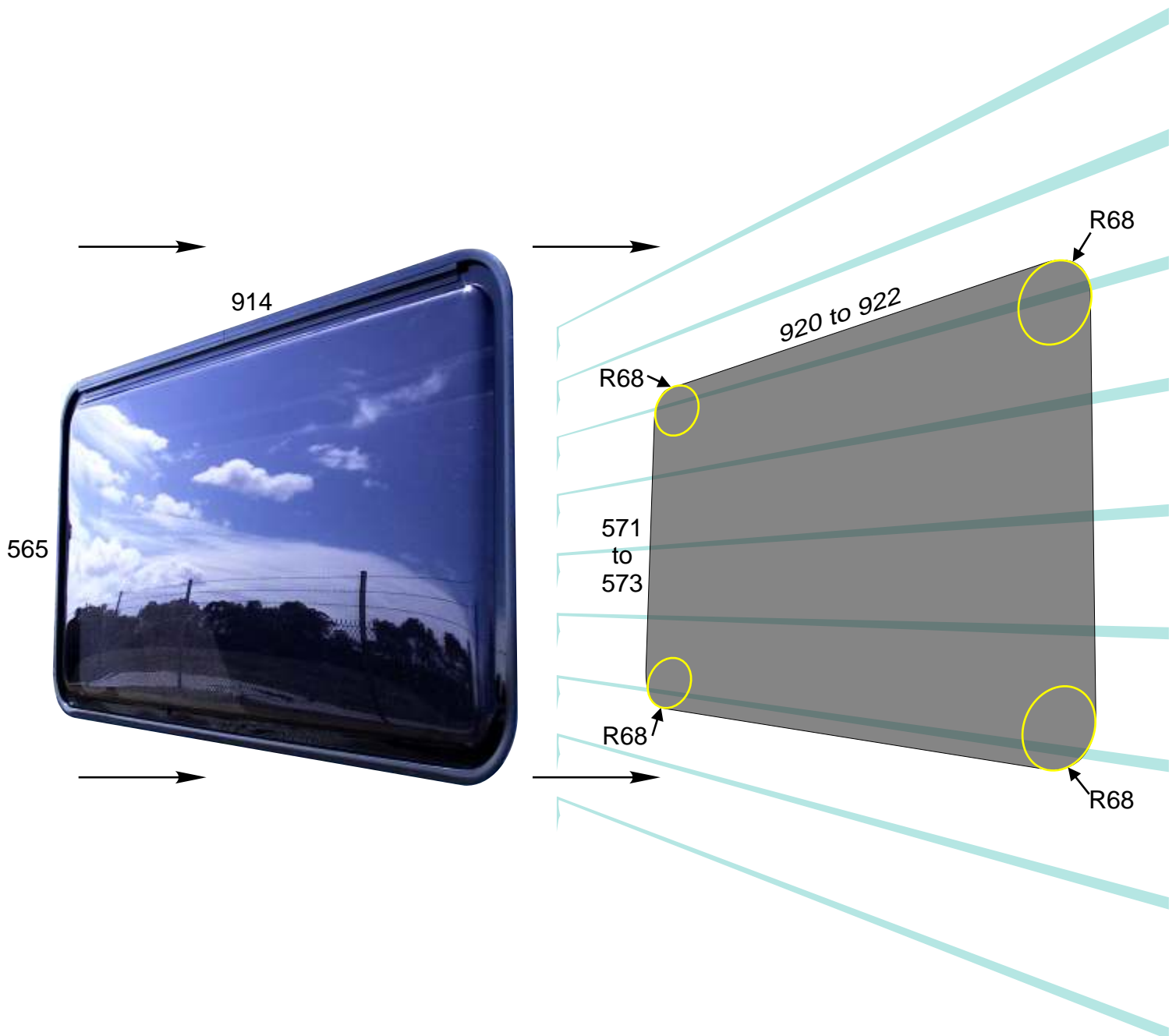




CAMEC[®]

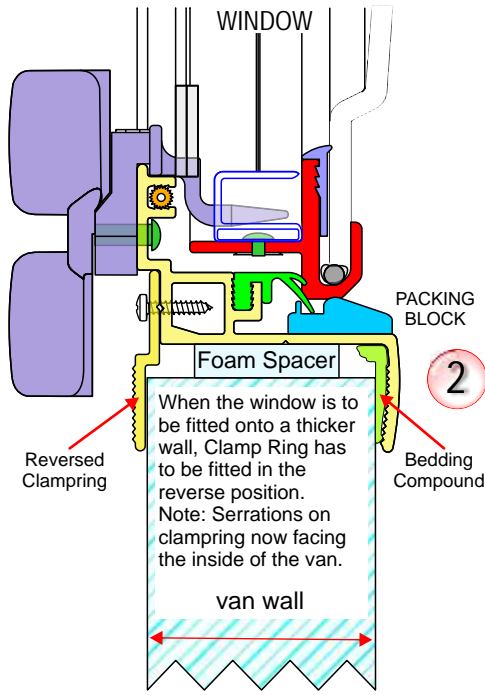
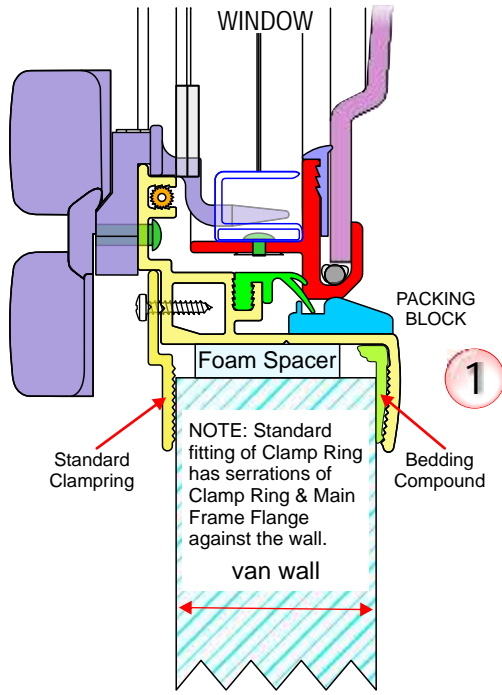
**FITTING INSTRUCTIONS
FOR
CAMEC 4 RADIUS CORNER
SLIMLINE WIND OUT WINDOW**

1. To install Camec 4RC window correctly please follow these Fitting Instructions.
2. All cut-outs to be 6 mm -0 +2 mm larger than nominal sizes on ALL windows.
3. Example: Standard Fitting of Clamp Ring:
565 x 914 Camec 4RC Window requires a cut-out size of 571 to 573 High x 920 to 922 Wide, with 68 mm radiuses cut in each corner.
5. Cut-outs to be square and parallel within 1-2 mm.

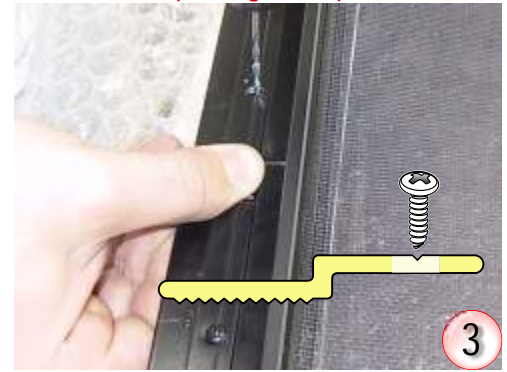


FOR ALUMINIUM CLADDING, FILL OVERLAPPING SEAMS WITH SILICONE AND CRUSH.
CLEAN SURFACE AROUND HOLE TO REMOVE OILS, DUST ETC.

STANDARD FITTING



Take Care!
 Join in Clamp Ring at Top of Window



Take Care! Only drill through the first layer of the extrusion. Do NOT drill further down - 5mm. maximum.
 Place window acrylic front side down on a clean non-abrasive surface. Bubblewrap was used in above photo. Place clamping in position on the window - making sure it's the right way up. With the clamp ring ends at the top of the window drill 2 x 2.5mm pilot holes using the clamp ring as a template.



Anchor clamping ends with 2 screws.

Use a 2.5 mm drill bit to drill holes.

Use No. 6G x 3/8" or 10 mm long PHILLIPS screw. Zinc Plated.
 Take Care! Longer screws will damage window



Clamping at the top of the window now anchored securely.

Anchor the clamping at the bottom of the window in the same manner by drilling mainframe and anchoring with another 2 screws.



With the clamping anchored to the window - drill the rest of the holes into the mainframe.



Drill holes all the way around the window until all the holes are drilled out.



Remove anchoring screws.



Remove clamping from window.



Clean window from aluminium swarf by blowing away with compressed air.



Clean dust and dirt from around the opening where the window is going to be fitted. Wipe window main frame flange with a dry cloth to remove dust. Apply bedding compound to flange. Foam tape is used in this case in the above picture.



For bedding compound use:
 1). Butyl mastic.
 2). Double sided or one sided foam tape.
 3). Silicone sealant.
 4). A suitable combination of the above.
DO NOT USE AN ADHESIVE



Apply foam tape all the way around the flange. Mid-Bottom of the window is a suitable starting point. Take particular care around the four radius corner. Cut off tape end at the starting point to form a continuous seal. Join foam tape, cleanly, as above. Apply bead of silicone to foam tape.



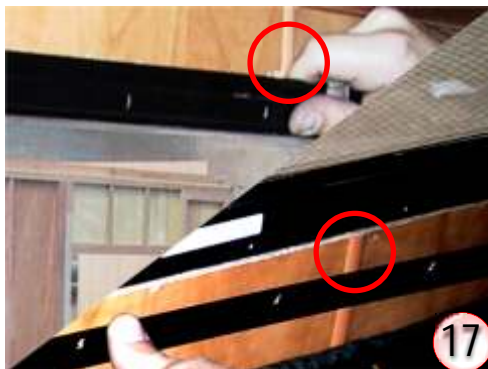
Fill seams with silicone then crush. Position window in opening on the wall of the van where it is going to be permanently installed. Do this from the outside of the van. *Note! Bottom of the window to go in first - to clear thumb locks.*



With the bottom of the window in place, gently push the top of the window in position in the opening.



One person needs to hold window from the outside of the van until a second person starts reinstalling the clampring to the window from the inside of the van. Clampring must be reinstalled in exact position for the holes to match up.



This T section of plastic extrusion needs to be cut out for the clampring to be positioned flat against the plywood.



Top of window. T-section cut out the same height as the clampring.
 IF REQUIRED



IF REQUIRED

19

Bottom of window. T-section cut out the same height as the clamping.

Plastic T-Joiner is used to join plywood panels together. It can be anywhere along the width of the window.



20

Position clamping around the window in the same as when holes were drilled.



21

Clamping must clear thumblocks first.



22

Line up holes next to left and right thumblocks.



23

Install clamping with self tapping screws.



24

Start with the end screws and the clamping joint at the top of the window.

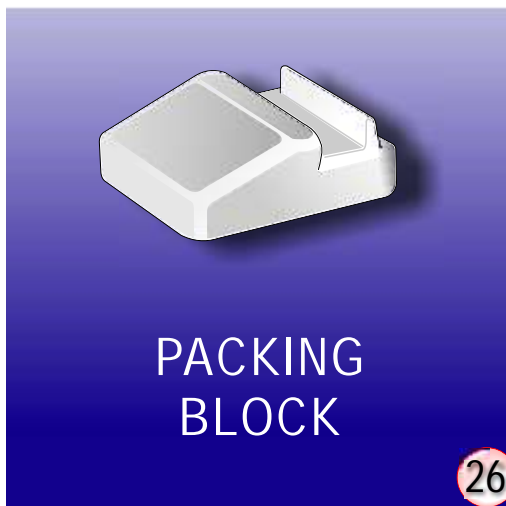
Note! When using silicone bedding only, do not fully tighten clamping until silicone has cured. Over tightening when silicone is green WILL cause leaks.



25

Fasten 2 bottom screws.

The rest of the screws can be installed. Remove excess silicone or any other bedding compound - general cleanup.



PACKING
 BLOCK

26

REMOVE PLASTIC PACKING
 BLOCKS AND INSTALL
 HANDLE IN THE MOST
 CONVENIENT SIDE OF WINDOW.

FINISHED PRODUCT

