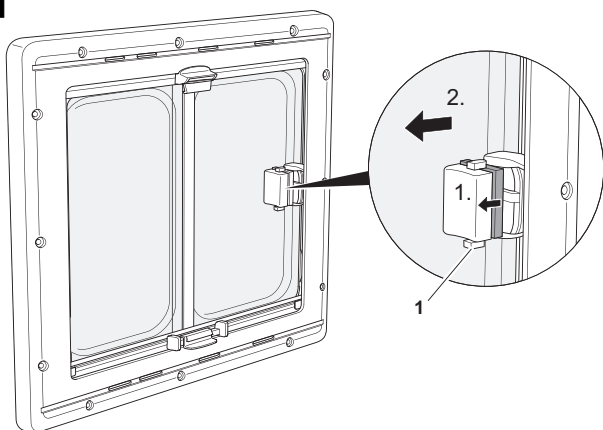
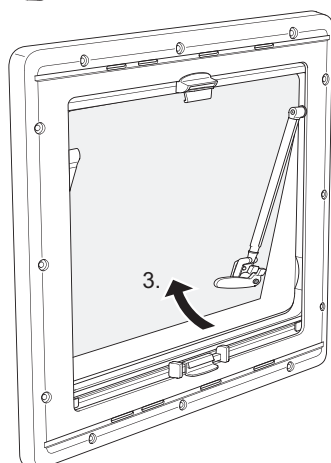
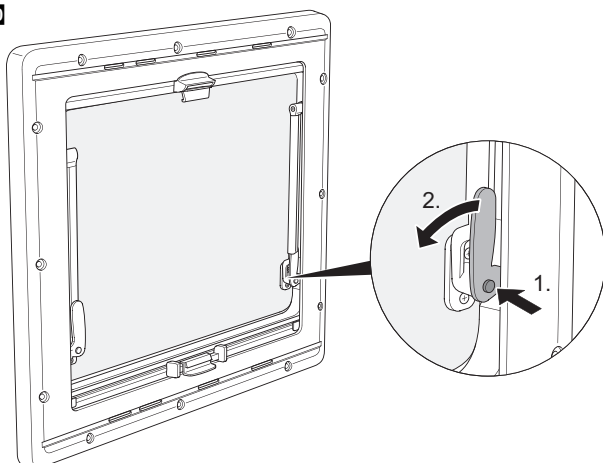
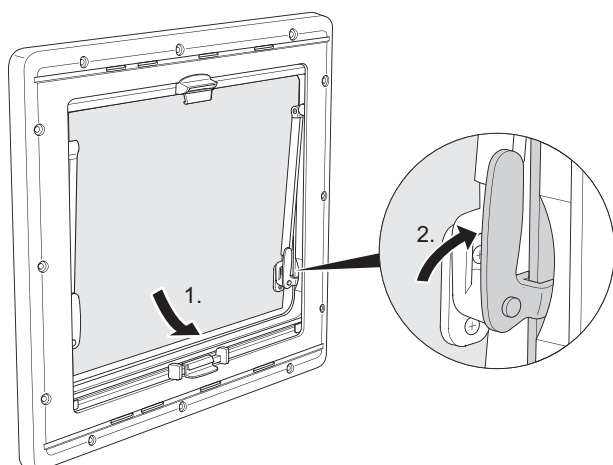
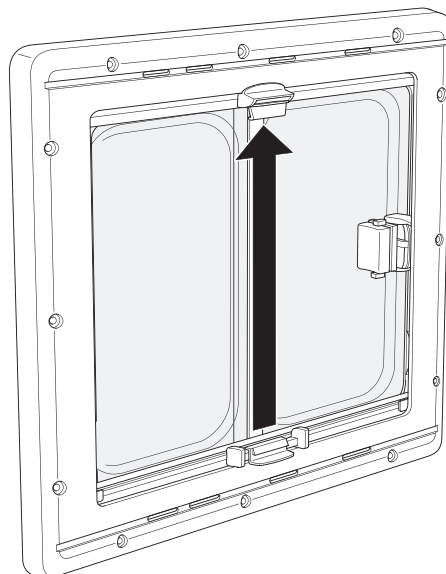
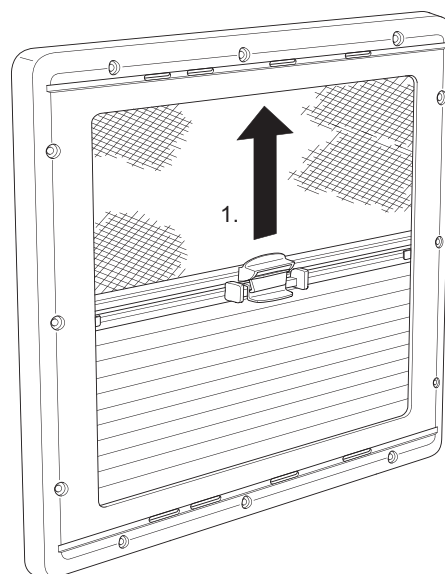
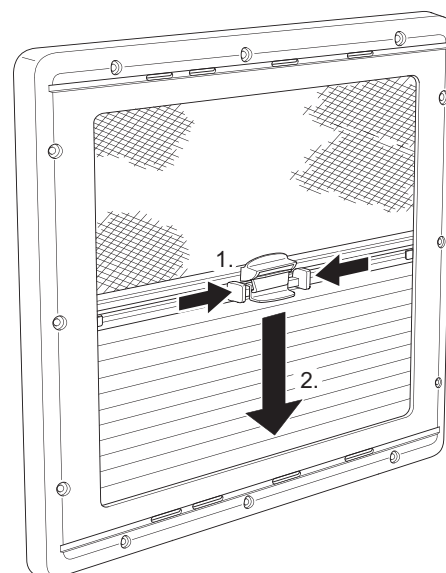


1 9**10****11****1 12****13****14**

Dometic WAECO International GmbH
Hollefeldstrasse 63
D-48282 Emsdetten

www.dometic-waeco.com



EN	Wall window Installation and Operating Manual . . . 3
DE	Wandfenster Montage- und Bedienungsanleitung 12
FR	Fenêtre murale Instructions de montage et de service 21
ES	Ventana Instrucciones de montaje y de uso . 30
IT	Finestra Istruzioni di montaggio e d'uso . . . 39
NL	Wandvenster Montagehandleiding en gebruiksaanwijzing 48
DA	Vægvindue Monterings- og betjeningsvejledning 57
SV	Väggfönster Monterings- och bruksanvisning . . . 66
NO	Veggvindu Monterings- og bruksanvisning . . . 75
FI	Sivuikkuna Asennus- ja käyttöohje 84
PT	Janela de parede Instruções de montagem e manual de instruções 93
RU	Окно в стену Инструкция по монтажу и эксплуатации 102



S4

PL	Okno ścienne Instrukcja montażu i obsługi 111
CS	Okno Návod k montáži a obsluze. 120
SK	Stenové okno Návod na montáž a uvedenie do prevádzky 129
HU	Fali ablak Szerelési és használati útmutató . 138

Please read this instruction manual carefully before installation and first use, and store it in a safe place. If you pass on the product to another person, hand over this instruction manual along with it.

Table of contents

1	Notes on using the instruction manual	3
2	Safety and installation instructions	4
3	Scope of delivery	5
4	Intended use	5
5	Instructions before installation	5
6	Installing S4	6
7	Using S4	9
8	Maintaining and cleaning S4	10
9	Warranty	11
10	Disposal	11

1 Notes on using the instruction manual



WARNING!

Safety instruction: Failure to observe this instruction can cause fatal or serious injury.



NOTICE!

Failure to observe this instruction can cause material damage and impair the function of the product.



NOTE

Supplementary information for operating the product.

2 Safety and installation instructions

Please observe the prescribed safety instructions and stipulations from the vehicle manufacturer and service workshops.

The manufacturer accepts no liability for damage in the following cases:

- Damage to the product resulting from mechanical influences
- Alterations to the product without express permission from the manufacturer
- Use for purposes other than those described in the operating manual



NOTE

If you do not have sufficient technical knowledge for installing the components in vehicles, you should have a specialist install the wall window in your vehicle.

Please note the following:

- If faults or disturbances occur, consult a specialist workshop immediately.
- Before starting your journey, check that the wall window is locked properly.
- Before starting your journey, check the wall window for damage (such as tension cracks in the acrylic glass).
- Do **not** open the wall window in strong wind or rain.
- Close the wall window if it rains or snows.
- Do **not** leave the vehicle with the wall window open.



WARNING!

Always keep the vent window closed while driving and while on public roads.

3 Scope of delivery

No. in fig. 1	Quantity	Description
1	1	Outer frame
2	1	Inner frame
3	26	Fastening bolt Ø 3.9 x 25 mm
4	26	Caps

4 Intended use

The S4 wall window is suitable for installing in caravans and motorhomes. It is designed as a vent window or sliding window.

5 Instructions before installation

- Before installation, check the wall thickness of your vehicle. Consult the vehicle manufacturer if you have any questions.
- When choosing the installation location, observe the following:
 - Adjoining components (attachment and reinforcing parts), cables and cabinets in the vehicle interior must not get damaged when sawing the hole.
 - Sufficient space needs to be available for installing the inner and outer frames.
 - Only install the wall window on flat wall surfaces.
 - Note that when installing the sliding window the movable window pane is at the front in the direction of travel when closed.

5.1 Pressing out the hole

See fig. **2**

5.2 Using the reinforcing rails

Supplementary to fig. 3

- Before installation, check whether the wall hole needs reinforcing.
- Remove the foam/insulation according to the width of your reinforcing rails (not in scope of delivery) (A).
- Fit the reinforcing rails (B).

6 Installing S4

Supplementary to fig. 4

The scope of delivery includes a inner frame which is suitable for a wall thickness of 26 mm. For wall thicknesses of under 26 mm, you must put the inner frame underneath. For wall thicknesses of 27 – 53 mm, you must place the spacer strips between the inner and outer frames.

- Measure the wall thickness W.

Supplementary to fig. 5 A: Wall thicknesses of 1 – 25 mm:



NOTE

For wall thicknesses of 1 – 26 mm, use the 3.9 x 25 mm fastening screws included in the scope of delivery.

- Glue a base to the inner frame referring to the table below:

Wall thickness	Height of the base	Wall thickness	Height of the base
1 – 2 mm	25 mm	15 – 16 mm	11 mm
3 – 4 mm	23 mm	17 – 18 mm	9 mm
5 – 6 mm	21 mm	19 – 20 mm	7 mm
7 – 8 mm	19 mm	21 – 22 mm	5 mm
9 – 10 mm	17 mm	23 – 24 mm	3 mm
11 – 12 mm	15 mm	25 mm	1 mm
13 – 14 mm	13 mm	26 mm	–

Supplementary to fig. 5 B: Wall thicknesses of 27 – 53 mm:

- Select the spacer strips (1) by referring to the table below.

Wall thickness	Height of the spacer strips	Fastening screws (Not in scope of delivery)
27 – 28 mm	5 mm	3.9 x 30 mm
29 – 30 mm	7 mm	3.9 x 30 mm
31 – 32 mm	9 mm	3.9 x 30 mm
33 – 34 mm	11 mm	3.9 x 30 mm
35 – 36 mm	13 mm	3.9 x 30 mm
37 – 38 mm	15 mm	3.9 x 40 mm
39 – 40 mm	17 mm	3.9 x 40 mm
41 – 42 mm	19 mm	3.9 x 40 mm
43 – 44 mm	21 mm	3.9 x 40 mm
45 – 46 mm	23 mm	3.9 x 45 mm
47 – 48 mm	25 mm	3.9 x 45 mm
49 – 50 mm	27 mm	3.9 x 45 mm
51 – 52 mm	29 mm	3.9 x 50 mm
53 mm	31 mm	3.9 x 50 mm

**NOTE**

You can use spacer strips made of wood, plastic or aluminium.
The spacer strips should be 4 mm wide.

- Ensure the spacer strips (1) have a bevel (2) of 2 mm x 45° or a radius (2) of 2 mm.
- Stick the spacer strips (1) to the outer frame, e.g. using double-sided sticky tape (3).

See fig. 6

- Clean the wall section in the installation area.

See fig. **7**

**NOTICE!**

Observe the sealant manufacturer's instructions.

- Seal the outer frame with a flexible non-hardening sealing compound (e.g. SikaLastomer-710).

See fig. **8**

- Place the outer frame in the middle of the wall section.
- Press the outer frame slightly onto the wall so that the packing compound spreads out.
- Place the inner frame into the support strips on the outer frame and attach it with the appropriate fastening screws **(1)**.
Only fasten the screws slightly by hand.
(max. torque 3 Nm)
- Check that the roller blinds can move freely.
If the roller blinds cannot move freely, undo the screws **(1)** slightly.
- Cover the screw holes with the caps **(2)**.
- Remove the protective film from both sides of the acrylic glass.

**NOTE**

If the protective film is exposed to sunlight for too long, it cannot be taken off without leaving a residue.

- After installing, check the wall window works properly.
- If necessary, enter the new weight in the vehicle documents.

7 Using S4

7.1 Using the sliding window (fig. 9)

Opening the sliding window

- Loosen the safety bolts (1) first, if necessary.
- Press the locking pivot on the handle and push the window into the required position.

Closing the sliding window

- Close the window until you hear the lock click.

7.2 Using the vent window (fig. 10)

Opening the vent window

- Press the locking button on all the rotary bolts and turn by 90°.
- Tilt the window pane outwards until it reaches the required opening angle.
- **Continuous ventilation:** Attach the pane as shown in fig. 11.

Closing the vent window

- Pull the pane back at one of the bottom rotary bolts.
Here you must overcome the tension of the vent.
- Turn the rotary bolts by 90°.
When in a closed position, the outer lobe of the rotary bolt must be positioned inside the frame.

7.3 Opening and closing roller blinds



NOTICE! *Risk of damage due to a build-up of heat between the roller blind and the window.*

In strong sunlight, only close the blackout roller blind two thirds of the way.

- Hold the blackout roller blind at the grip and pull it to the flyscreen (fig. 12).
- Click the blackout roller blind onto the flyscreen.
- Select the required position by moving the two latched-roller blinds at the same time and allow to latch into place (fig. 13).

Opening the roller blind

- Move the roller blind so that the blackout roller blind is closed.
- Separate the roller blinds by pressing the pivot on the flyscreen.
- Guide the flyscreen back.
Do not let the roller blind spring back.
- Open the blackout roller blind by pressing together the two sliders at the side on the grip. (fig. 14)

8 Maintaining and cleaning S4



NOTICE!

Do not use any sharp or hard objects for cleaning since they may damage the acrylic glass.

Only use cleaning agents that are approved by the manufacturer. Acrylic glass polish (item no. 9103501188), special polishing cloth (item no. 9103501190) and acrylic glass cleaning agent (item no. 9103501189) or the cleaning set (item no. 9103501201).

- Clean the roller blind with mild soap and water.
- Put talcum powder on the rubber seal.

9 Warranty

The statutory warranty period applies. If the product is defective, please contact the service partner in your country (addresses on the back on the instruction manual).

Our experts will be happy to help you and will discuss the warranty process with you in more detail.

10 Disposal

- Place the packaging material in the appropriate recycling waste bins wherever possible.



If you wish to finally dispose of the product, ask your local recycling centre or specialist dealer for details about how to do this in accordance with the applicable disposal regulations.