

DOMETIC VENTILATION SYSTEMS

Dometic RV ventilation systems have been designed specifically to provide optimum ventilation and therefore significantly better cooling performance for all Dometic absorption refrigerators.

TECHNICAL DATA

AS1625 vent kit

Upper vent set consists of:

Upper frame

Ref No: RS1640U

Upper vent

Ref No: AS1625U

Upper vent insert

Ref No: AS1625i

Alum flue tube

Ref No: Alumtube

Lower vent set consists of:

Lower frame

Ref No: RS1650L

Lower vent

Ref No: AS1635L

Mounting frame cut out size:

W451 x H156 mm

Open area of upper vent: 328 cm²

Open area of lower vent: 350 cm²

Gas flue Tee piece connection. Kit includes one extension.

Ref No: TP

Gas flue extension

Each extension add 43 mm to the height of the Tee piece.

Ref No: TXP

Gas flue kit:

Ref No: 3776

Motorhome wall vent:

Overall:

W587 x H385 mm

Cut out required:

W550 x H350 mm

Clear opening with vent removed:

W556 x H303 mm

Open ventilation area: 4450 cm²

Ref No: 3109350.110

Motorhome vent roof cap:

Ref No: 3311246.000

W310 x L670

x H100 mm

Combined with

Motorhome vent roof base:

Ref No: 3311237.000

W210 x L660 x H95 mm

Assembled over all dimensions:

W310 x L670 x H125 mm

Open ventilation area: 730 cm²

LS300 vent and frame

Cut out required:

W490 x H249 mm

Open ventilation area: 667 cm²

Ref No: LS300

NOTE:

These ventilation options are intended to compliment the original installation and operating instructions supplied with each Dometic refrigerator and are the preferred ventilation systems for all Dometic absorption refrigerators.

Current AS/NZS 5601.2:2010 and future amendments to the gas installation regulations must be adhered to at all times. Warranty claims due to incorrectly ventilated, installed or flued refrigerators are not covered by the usual Dometic two year Australia wide warranty. All details are subject to alteration without notice.

AUSTRALIA

Dometic Australia, Queensland 1

1 John Duncan Court
Varsity Lakes QLD 4227
Phone: +61 (0)7 5507 6000
Fax: +61 (0)7 5507 6001
E-mail: sales@dometic-waeco.com.au
Web: www.dometic-waeco.com.au

Dometic Australia, Queensland 2

2/129 South Pine Road
Brendale QLD 4500
Phone: +61 (0)7 3205 7599
Fax: +61 (0)7 3881 1409
E-mail: sales@dometic-waeco.com.au
Web: www.dometic-waeco.com.au

Dometic Australia, Victoria

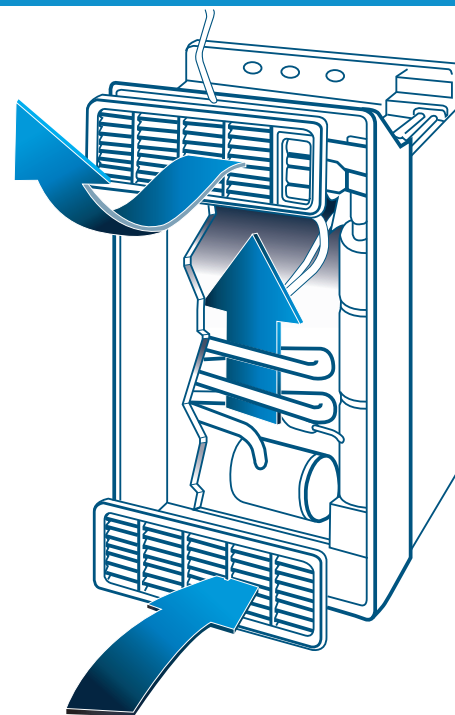
Bldg 3B, Clayton Business Park
1508 Centre Road, Clayton VIC 3168
Phone: +61 (0)3 9239 1000
Fax: +61 (0)3 9239 1099
E-mail: sales@dometic-waeco.com.au
Web: www.dometic-waeco.com.au

Dometic Australia, Western Australia

12 Prosperity Avenue
Wangara WA 6065
Phone: +61 (0)8 9303 3555
Fax: +61 (0)8 9303 3577
E-mail: sales@dometic-waeco.com.au
Web: www.dometic-waeco.com.au

OPTIMAL INSTALLATION OF DOMETIC 3 WAY ABSORPTION REFRIGERATORS

IN CARAVANS, MOTORHOMES AND CAMPERS.



Dometic absorption refrigerators for caravans, motorhomes and campers are built to provide excellent cooling performance, even in high ambient temperatures.

Difficulties with the performance of the refrigerator can be avoided by installing it correctly and/or by improving both the installation and ventilation of an existing installation.

CORRECT INSTALLATION IS VERY IMPORTANT.

1. The installation and connections of gas supply must be made by an authorised gas fitter in compliance with the Australian Gas Authority regulations.
2. The location of the refrigerator should be such that the ventilation vents are not blocked by the vehicle door when open.
3. The refrigerator should be installed on a hard flat level surface.
4. The recess for the refrigerator should be sealed from the living area of the vehicle. **No gas leak or exhaust gases can penetrate into the living area.**
5. The space between the refrigerator cabinet and the furniture should be kept to a minimum. This is to exclude the warm air given off by the cooling unit from blanketing the cabinet. If possible fill any void with glass insulation wool down both sides and on top of the refrigerator cabinet.

CONTINUED OVER >>

MY COMFORT
12012

www.dometic-waeco.com.au

INSPIRED BY COMFORT

PROPER INSTALLATION IS VERY IMPORTANT. CONTINUED

6. Regardless of which option of ventilation method is used, the following points must be followed.

- The bottom of the lower vent must be at the floor level that the refrigerator cabinet is mounted on (the floor). If the lower vent is above the floor level, a 40 mm hole must be made through the floor to provide an escape for any possible gas leak.
- The top vent must be mounted above the refrigerator cooling unit. The rule is **THE BOTTOM OF THE TOP VENT MUST BE AT THE VERY LEAST EQUAL TO OR ABOVE THE TOP OF THE REFRIGERATOR**. This is to ensure all of the air moving up through the vents will pass through the complete cooling unit.

Note: There are installations where it may not be possible to position the top vent completely above the top of the cabinet. This can be due to vehicle design restrictions. The refrigerator will still work, however for the best performance, particularly in high ambient conditions, the top vent should be above the cabinet.

- A suitable metal warm air deflector plate should be fitted to direct the rising warm air from the cooling unit to the outside via the top vent. This deflecting plate should be as wide as possible and be fitted in such a way that it does not interfere with the wiring on top of the refrigerator cabinet.

DOMETIC 3 WAY REFRIGERATOR VENTING OPTIONS.

SUITABLE FOR MOTORHOMES, CARAVANS AND CAMPERS.

OPTION ONE

Common ventilation system up to 100 litres.

Ventilation components required are:

- 1 x **AS1625** vent kit (top & bottom frames & vents)
Includes the aluminium flue connection.
Ref No: AS1625

- 1 x **TP** Includes 1 x Tee piece & 1 x extension
Ref No: TP

Extra extensions may be required dependent on the height of refrigerator and vent height.

Ref No: TPX



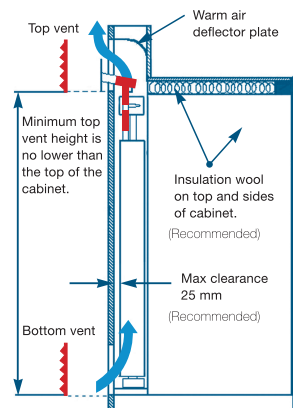
AS1625 vent kit.
Each vent has
328 cm² open area

TP kit

TPX extension

Note: each TPX adds 43 mm in height

VENTILATION
SYSTEM FOR
REFRIGERATORS
UP TO 100 LITRES
CAPACITY



OPTION TWO

Common motorhome ventilation system.

Ventilation components required are:

- 1 x Motorhome wall vent. **Ref No: 3109350.110**
- 1 x Motorhome roof base. **Ref No: 3311237.000**
- 1 x Motorhome roof cap. **Ref No: 3311246.000**
- 1 x Gas flue kit. **Ref No: 3776**



Roof Cap & roof base open
ventilation area of 730 cm²

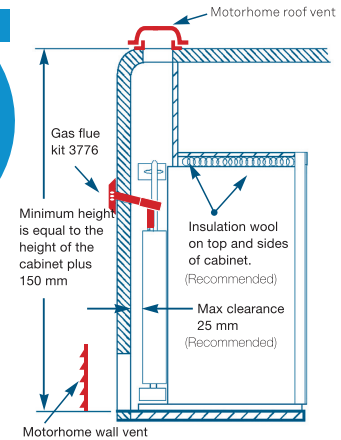


Gas flue kit



Motor home wall vent. Each
vent has 450 cm² open area.

VENTILATION
SYSTEM FOR
REFRIGERATORS
FROM 101 TO 200
LITRES CAPACITY



OPTION THREE

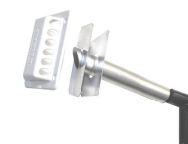
Common motorhome & caravan ventilation system.

Ventilation components required are:

- 2 x Motorhome wall vents. **Ref No: 3109350.110**
- 1 x Gas flue kit. **Ref No: 3776**

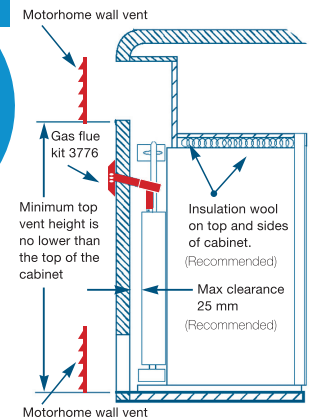


Motorhome wall vent. Each
vent has 450 cm² open area.



Gas flue kit

VENTILATION
SYSTEM FOR
REFRIGERATORS
FROM 101 TO 200
LITRES CAPACITY



OPTION FOUR

Common motorhome & caravan ventilation system.

Ventilation components required are:

- 2 x Vent and frame. **Ref No: LS300**
- 1 x Gas flue kit. **Ref No: 3776**



LS300 vent and frame cut out
required **W**490 mm x **H**249 mm.
Each vent has open
area of 667 cm²



Gas flue kit

RECOMMENDED

VENTILATION
SYSTEM FOR
REFRIGERATORS 101
TO 200 LITRES AND
GREATER THAN 200
LITRES

